

YEAR 2013

CORE STATION 1025

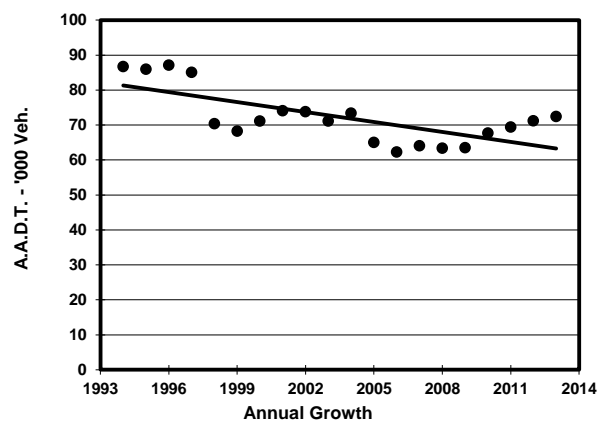
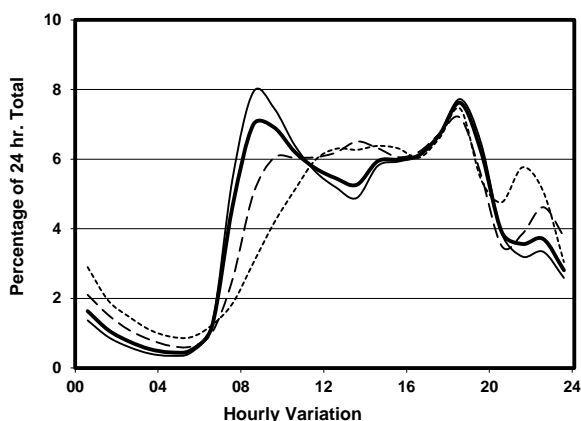
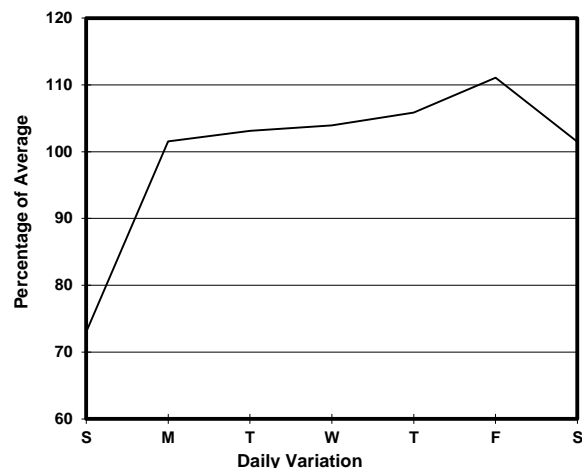
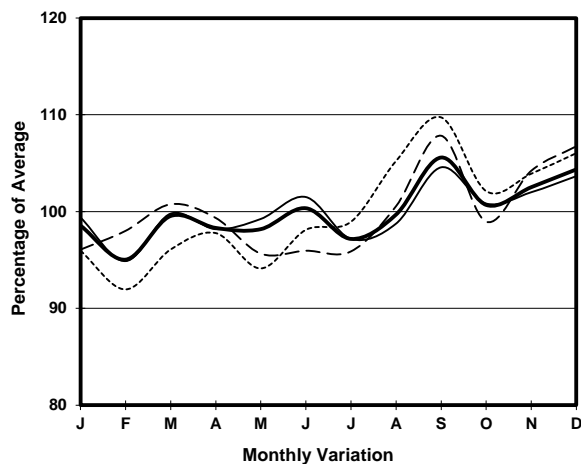
ROAD NETWORK MAJOR

ROAD TYPE URBAN TRUNK ROAD

LINK EASTERN HARBOUR CROSSING (from TOLL PLAZA to SOUTH PORTAL)



1. TRAFFIC FLOW VARIATION AND GROWTH



2. TRAFFIC CHARACTERISTICS (BY DIRECTION)

Parameter	All - Day	Mon. - Fri.	Sat.	Sun.
SOUTH BOUND				
A.A.D.T.	35770	38230	36810	26200
R 12 / 24 - %	75.6	77.4	72.5	66.9
R 16 / 24 - %	91.7	92.7	89.4	87.5
AM Peak Hour	0900-1000	0800-0900	0900-1000	0900-1000
One-way flow at AM peak hour	2720	3150	2610	1260
T - % (AM)	-	12.1	-	-
PM Peak Hour	1800-1900	1800-1900	1800-1900	1800-1900
One-way flow at PM peak hour	2690	2910	2590	1960
T - % (PM)	-	5.3	-	-
Prop.of commercial vehicles - 16 hr.	-	7.8	-	-
NORTH BOUND				
A.A.D.T.	36660	39070	37800	27320
R 12 / 24 - %	71.7	73.2	69.3	64.1
R 16 / 24 - %	90.4	91.6	87.4	85.6
AM Peak Hour	0800-0900	0800-0900	0900-1000	0900-1000
One-way flow at AM peak hour	2420	2980	1890	970
T - % (AM)	-	5.9	-	-
PM Peak Hour	1800-1900	1800-1900	1800-1900	1800-1900
One-way flow at PM peak hour	2830	3060	2780	2030
T - % (PM)	-	5.9	-	-
Prop.of commercial vehicles - 16 hr.	-	7.3	-	-

3. OTHER INFORMATION AND COMMENT

4. Vehicle classification and occupancy - Monday to Friday

Time		Class of vehicle									
		Motor Cycle	Private Car	Taxi	Private LB	PLB	Goods veh.		Non Fr. Bus	Fr. Bus	
							Light	M & H		SD	DD
0700-0800	Pro	4.8	45.4	26.0	0.9	1.2	11.0	2.8	2.2	0.0	5.6
	Ocp	1.0	1.5	2.2	8.7	15.6	1.7	1.5	25.7	0.0	70.6
0800-0900 Peak hour	Pro	3.9	55.8	17.5	0.5	0.8	12.3	2.5	2.7	0.1	4.0
	Ocp	1.1	1.3	2.1	6.3	16.7	1.8	1.6	34.8	16.0	78.1
0900-1000	Pro	1.8	51.5	21.6	0.4	0.3	17.8	3.2	1.1	0.0	2.3
	Ocp	1.2	1.3	2.0	3.1	16.2	1.8	1.3	13.2	0.0	47.6
1000-1100	Pro	2.2	45.8	21.7	0.7	0.3	20.8	5.3	0.9	0.1	2.2
	Ocp	1.1	1.4	2.0	1.5	17.0	1.7	1.2	14.0	10.0	35.3
1100-1200	Pro	1.1	41.8	25.1	1.1	0.2	20.5	6.7	0.6	0.2	2.7
	Ocp	1.0	1.4	2.0	2.9	15.0	1.6	1.5	11.7	10.5	30.5
1200-1300	Pro	1.2	46.4	24.0	1.2	0.2	19.2	4.5	1.3	0.1	2.1
	Ocp	1.0	1.4	2.1	6.6	16.5	1.9	1.3	17.2	21.0	31.8
1300-1400	Pro	1.9	39.8	25.9	0.4	0.2	23.7	4.4	1.1	0.1	2.4
	Ocp	1.1	1.6	2.1	5.8	17.0	1.8	1.4	16.2	13.8	34.4
1400-1500	Pro	2.6	43.6	22.3	0.9	0.2	22.1	5.0	1.2	0.2	1.9
	Ocp	1.0	1.5	2.2	1.9	17.0	1.7	1.7	6.0	17.1	27.2
1500-1600	Pro	1.7	48.2	19.9	0.5	0.2	21.0	5.1	1.1	0.1	2.3
	Ocp	1.0	1.4	2.1	2.4	9.0	1.8	1.4	8.5	12.5	23.2
1600-1700	Pro	2.0	53.2	16.3	0.9	0.3	18.8	3.4	2.5	0.0	2.6
	Ocp	1.0	1.5	1.8	4.6	16.0	1.8	1.5	6.0	0.0	31.7
1700-1800	Pro	3.2	55.5	14.5	0.5	0.7	17.3	2.9	1.9	0.0	3.5
	Ocp	1.1	1.5	2.1	4.8	10.4	1.8	1.5	9.7	0.0	34.2
1800-1900	Pro	3.8	65.6	14.8	0.5	1.0	8.7	1.5	1.2	0.0	3.0
	Ocp	1.1	1.5	2.4	4.3	16.5	1.7	1.4	13.9	0.0	57.2
1900-2000	Pro	1.9	71.8	17.1	0.0	0.6	4.6	0.7	0.7	0.0	2.5
	Ocp	1.1	1.4	2.4	0.0	14.9	1.5	1.1	16.4	0.0	44.4
2000-2100	Pro	1.8	65.2	23.0	0.1	0.8	3.5	1.1	0.2	0.0	4.2
	Ocp	1.2	1.4	2.2	1.0	14.7	1.7	1.6	9.5	0.0	49.7
2100-2200	Pro	1.4	53.8	33.9	0.2	0.7	4.0	0.9	0.4	0.0	4.8
	Ocp	1.1	1.4	2.1	2.0	16.5	1.3	1.0	7.5	0.0	39.4
2200-2300	Pro	3.2	46.2	41.7	0.0	1.3	2.1	0.6	0.2	0.0	4.7
	Ocp	1.1	1.5	2.2	0.0	14.3	1.4	1.3	19.0	0.0	39.8
16 hours	Pro	2.4	52.7	21.3	0.6	0.5	14.9	3.3	1.3	0.1	3.0
	Ocp	1.1	1.4	2.1	4.3	15.2	1.7	1.4	16.7	14.8	46.0

Legend

- Pro.** Proportion of vehicles in % (Sum may not add up to 100% due to figure rounding)
- Ocp.** Average occupancy of vehicles
- M&H** Medium and Heavy